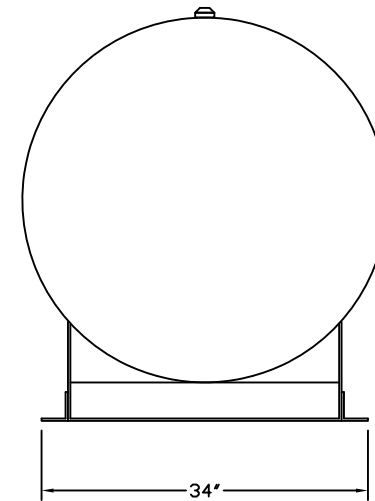
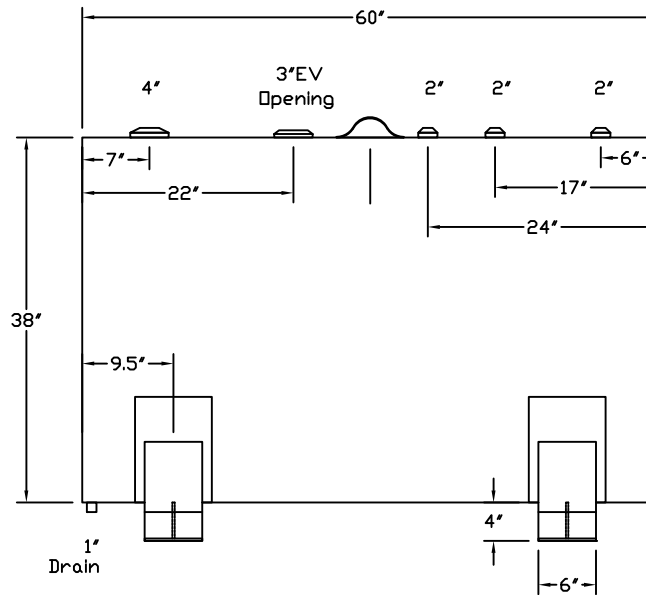
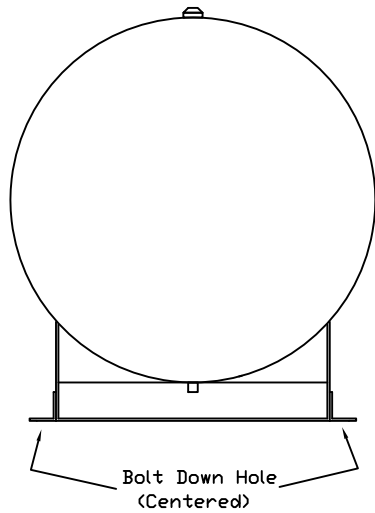


**Bart's Electrical Service**  
**Fuel tank**  
**(213) 595-5075**

Tank For Stationary Use Only

Capacity	300 Gallons	Heads Primary	12 Gauge	Paint Ext.	Red Primer
Design	Singlewall	Shell Primary	12 Gauge	Paint Int.	
Code	UL 142	Heads Secondary		Weight Empty	450 lbs.
Test Pres.	5 PSI	Shell Secondary		Rev.#	Date:



Customer: \_\_\_\_\_ Drg. Date: \_\_\_\_\_

Quoted Lead Times Begin Upon Receipt of signed Approved Drawing, Which Must be Returned Before Production Can Begin.

Drawing Approved By: \_\_\_\_\_