

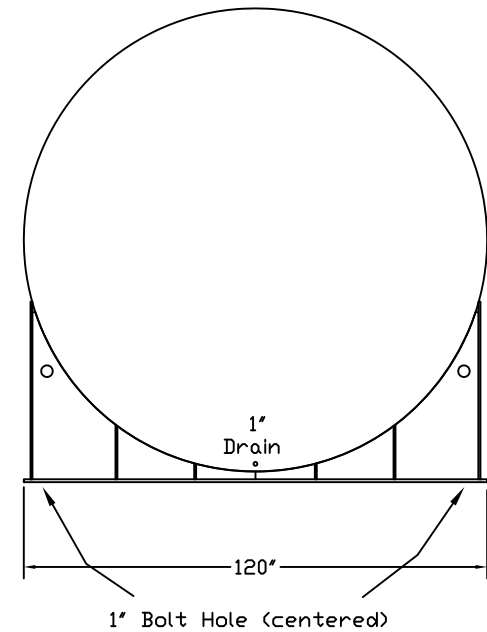
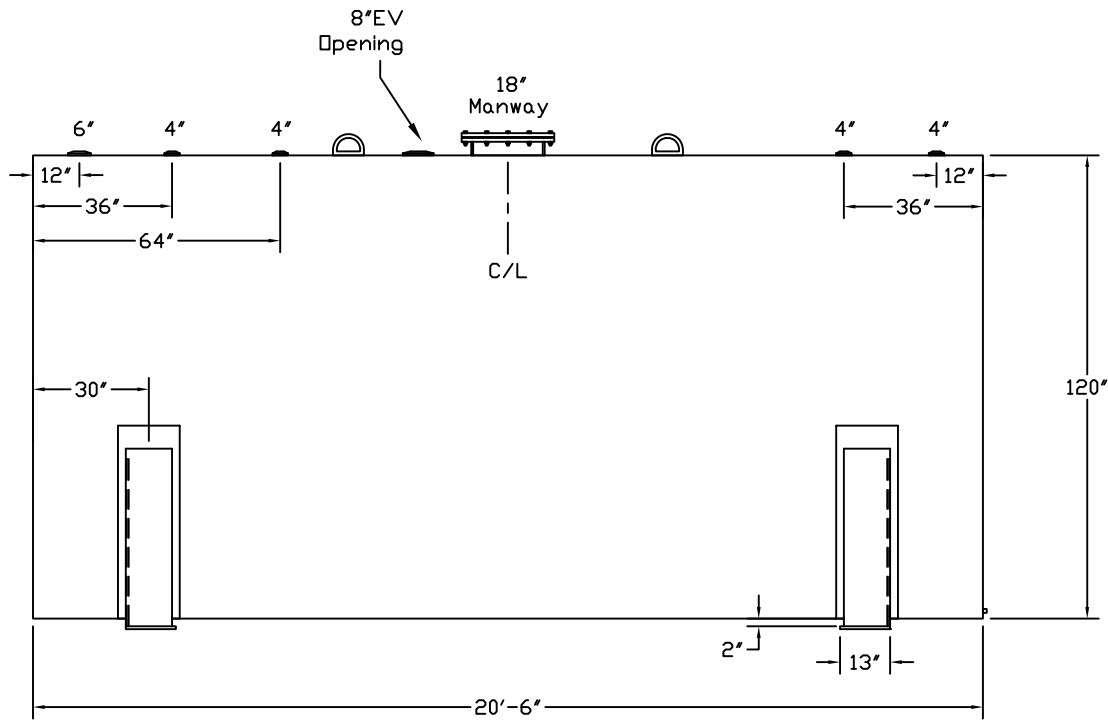
**Bart's Electrical Service**  
**Fuel gard**  
**(213) 595-5075**

Tank For Stationary Use Only

Capacity 12,000 Gallons  
 Design Singlewall  
 Code UL 142  
 Test Pres. 5 PSI

Heads Primary 1/4"  
 Shell Primary 1/4"  
 Heads Secondary           
 Shell Secondary         

Paint Ext. Red Primer  
 Paint Int.           
 Weight Empty 11,550 lbs.  
 Rev.#          Date:         



Customer: \_\_\_\_\_ Drg. Date: \_\_\_\_\_

Quoted Lead Times Begin Upon Receipt of signed Approved Drawing, Which Must be Returned Before Production Can Begin.

Drawing Approved By: \_\_\_\_\_